



# PROTECTION WHILE YOU'RE OUT AND ABOUT

[getready.qld.gov.au](http://getready.qld.gov.au)

There is no better way to see Queensland than getting out and about. Before you take off, Get Ready with some planning and preparation in the event you are caught in a severe storm, cyclone, flood or earthquake.



**PROTECT  
your vehicle**



**PREPARE  
for roadtrips**



**PROTECT  
your caravan**



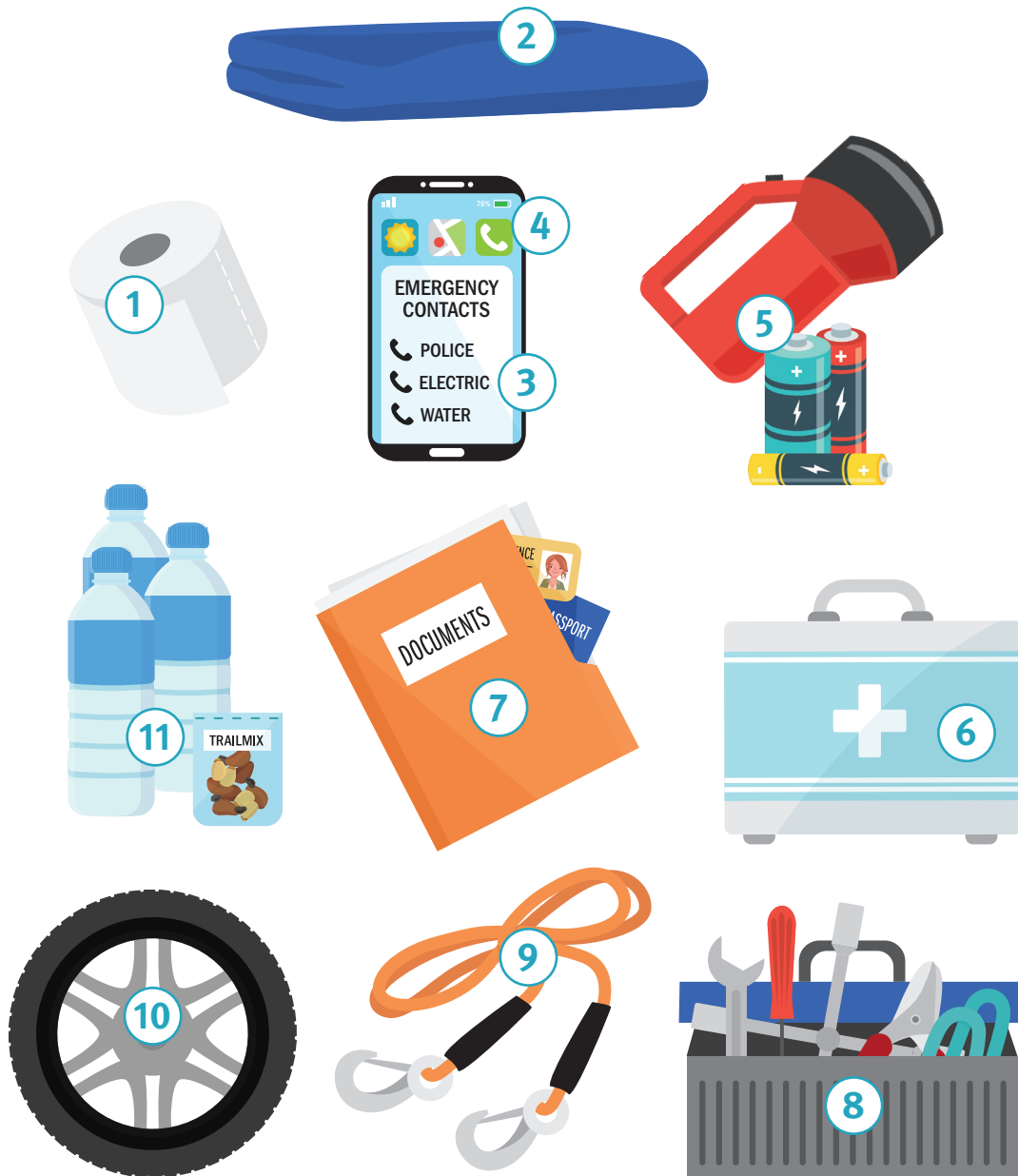
**PROTECT  
your boat**

## PROTECT YOUR VEHICLE



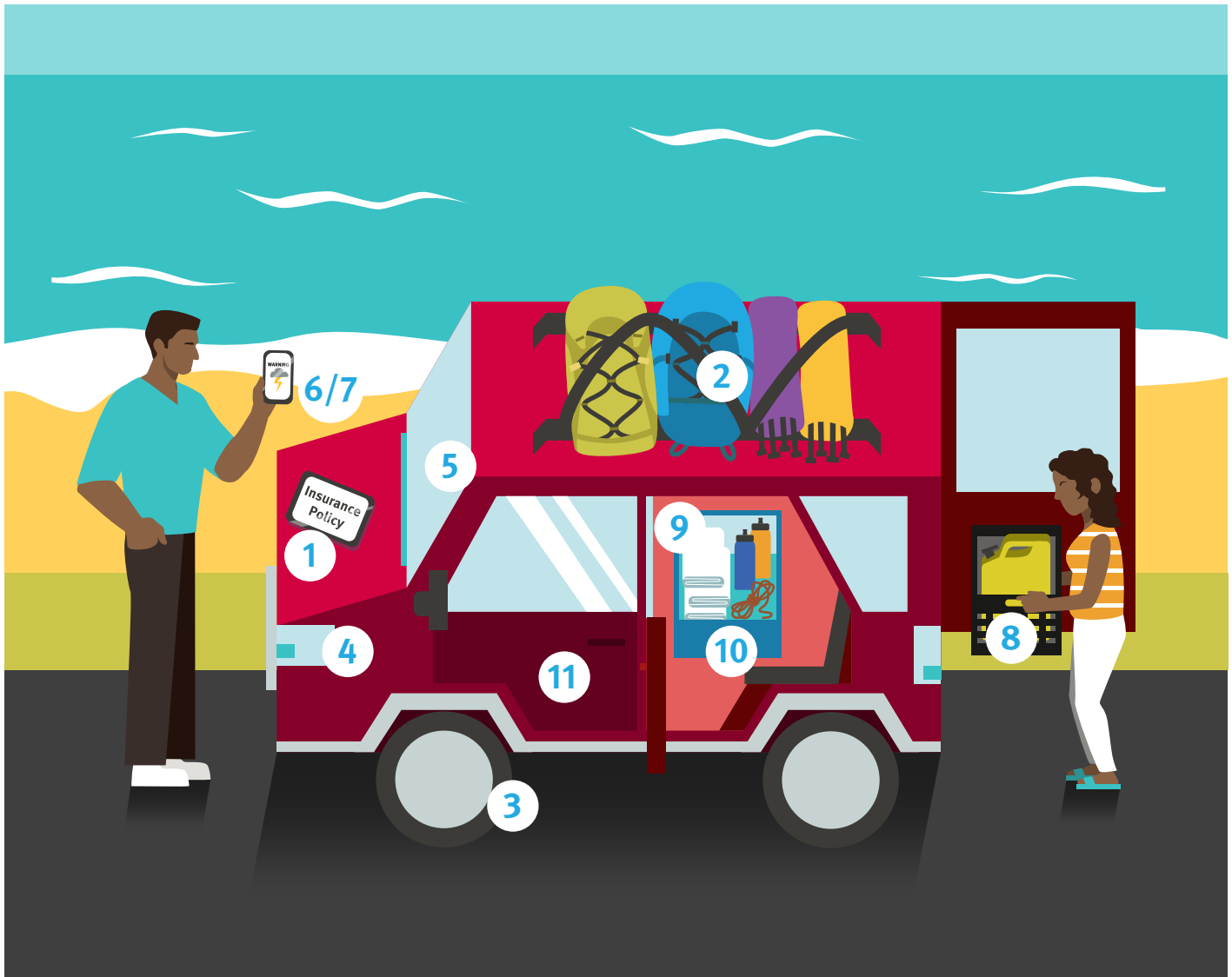
- 1 Ensure your car insurance is current and that it covers your vehicle adequately.
- 2 Check you have good tyre tread (at least 1.5mm deep across the whole tyre width).
- 3 Check all of your vehicle's lights work well.
- 4 Make sure your windscreen and lights are clean.
- 5 Ensure you have a spare supply of fuel for use in your vehicle to get you to the nearest fuel outlet (ensure you store fuel safely in an appropriate container).
- 6 Pack a vehicle emergency kit, stored at all times in your car (see over).
- 7 Save local emergency contact details in to your phone in case you need to call for help. Go to [www.getready.qld.gov.au/duringadisaster/emergencycontacts](http://www.getready.qld.gov.au/duringadisaster/emergencycontacts) for a full listing.
- 8 Download helpful apps and sign up to local weather warnings and road condition updates to stay informed, especially during storm and cyclone season. Check out [www.getready.qld.gov.au/alertsandwarnings](http://www.getready.qld.gov.au/alertsandwarnings) for some ideas.

## VEHICLE EMERGENCY KIT



- 1 It's always good to have a roll of toilet paper on hand.
- 2 In case you get stranded in your car overnight blankets will keep you warm and a tarpaulin will help keep the weather out of your car in case of a shattered windscreen or window. You can also use these items to protect your car if you get caught in a hail storm.
- 3 Save local emergency contact details into your phone in case you need to call for help. Go [www.getready.qld.gov.au/duringadisaster/emergencycontacts](http://www.getready.qld.gov.au/duringadisaster/emergencycontacts) for a full listing.
- 4 Download helpful apps and sign up to local weather warnings and road condition updates to stay informed especially using storm and cyclone season. Check out [www.getready.qld.gov.au](http://www.getready.qld.gov.au) for some ideas.
- 5 A heavy duty, waterproof torch (and spare batteries) will provide valuable light when you most need it. Avoid using your smartphone as a light source to preserve battery during an emergency.
- 6 Ensure you have a first aid kit and manual in case of any medical incident on the road.
- 7 Keep a photo copy of your driver's licence, passport, travel and insurance papers as back-up.
- 8 Pack a tool kit in case you need to do any mechanical repairs whilst on the road – you don't need to be a mechanic but it's good to know a few basic skills to get you to the next town if something goes wrong.
- 9 Pack a towrope in case you get bogged. However always abide by 'if it's flooded, forget it' if you come across any flooded road on your travels.
- 10 Know where the jack in the car is stored and have 1-2 spare tyres packed in case you get a puncture.
- 11 Keep bottled water and dry food/snacks in your car in case you are caught away from your home.

## ROADTRIP PREPARATION



- 1 Ensure your car insurance (or the rental companies' insurance) is current and that it covers your vehicle adequately.
- 2 Ensure your travel insurance is adequate to cover your belongings which may be damaged in the car during a natural disaster.
- 3 Check you have good tyre tread (at least 1.5mm deep across the whole tyre width).
- 4 Check all of your vehicle's lights work well.
- 5 Make sure windscreen and lights are clean.
- 6 Download useful apps and signup to local weather alerts for the areas you are visiting check out [www.getready.gov.au/alertsandwarnings](http://www.getready.gov.au/alertsandwarnings)
- 7 When severe weather warnings are issued, park vehicles under cover, away from trees, power lines and waterways.
- 8 Have a spare supply of fuel for use in your vehicle to get you to the nearest fuel outlet (ensure you store fuel safely in an appropriate container).
- 9 Store additional blankets or a hail cover in your car. If you cannot access undercover shelter for your vehicles during a severe storm or cyclone, firmly secure blankets or quilts to them to minimise hail damage.
- 10 Pack your roadtrip emergency kit (see over).
- 11 If you are in a moving vehicle during an earthquake stop as quickly as safety permits and stay in the vehicle.

## ROADTRIP EMERGENCY KIT



- 1 Ensure you have a first aid kit and manual in case of any medical incident on the road.
- 2 Queensland's summers can be extremely hot and humid bringing with it the risk of sunburns and insect bites so make sure you pack plenty of bug and mozzie repellent, at least 30+ sunscreen, glasses and a hat.
- 3 It's always good to have a roll of toilet paper on hand.
- 4 A heavy duty, waterproof torch (and spare batteries) will provide valuable light when you most need it. Avoid using your smartphone as a light source to preserve battery during an emergency.
- 5 Matches are extremely useful in the event you get stranded and need to start a campfire to keep warm.
- 6 Look into alternative communication equipment such as a two-way radio to have as a backup in an emergency as your mobile phone may not work in remote areas.
- 7 Keep bottled water and dry food/snacks in your car in case you are caught away from your accommodation (20L emergency use and 4L per person per day).
- 8 Take appropriate layers and types of clothing and footwear according to the type of environment you are visiting.
- 9 Pack a shovel and a towrope in case you get bogged. However always abide by 'if it's flooded, forget it' if you come across any flooded road on your travels.
- 10 Pack hard copy maps of the places you are visiting in case you lose mobile connection.
- 11 Keep a photo copy of your driver's licence, passport, travel and insurance papers as back-up.
- 12 Know where the jack in the car is stored and have 1-2 spare tyres packed in case you get a puncture.
- 13 Pack a tool kit in case you need to do any mechanical repairs whilst on the road – you don't need to be a mechanic but it's good to know a few basic skills to get you to the next town if something goes wrong.
- 14 Save into your phone local emergency contact details in case you need to call for help. [www.getready.qld.gov.au/duringadisaster/emergencycontacts](http://www.getready.qld.gov.au/duringadisaster/emergencycontacts) for a full listing.
- 15 Download helpful apps and sign up to local weather warnings and road condition updates to stay informed especially using storm and cyclone season. Check out [www.getready.qld.gov.au/alertsandwarnings](http://www.getready.qld.gov.au/alertsandwarnings) for some ideas.
- 16 A small fire extinguisher specifically for car use can help prevent a small flame from becoming unmanageable.
- 17 An esky is great to have to keep your water and any other other snacks cool during Queensland's hot summer.
- 18 Blankets are useful for not only keeping you warm in the event you are stranded in your vehicle overnight but they can also be used to protect your car if you are caught in a hail storm. A tarpaulin is also another handy item to pack to help keep the weather out of your car in case of a shattered windscreen or window.
- 19 Rubbish bags are handy on your travels to contain any rubbish but are also handy to waterproof any belongings in the event your vehicle exterior is exposed to rain and exposes your belongings.

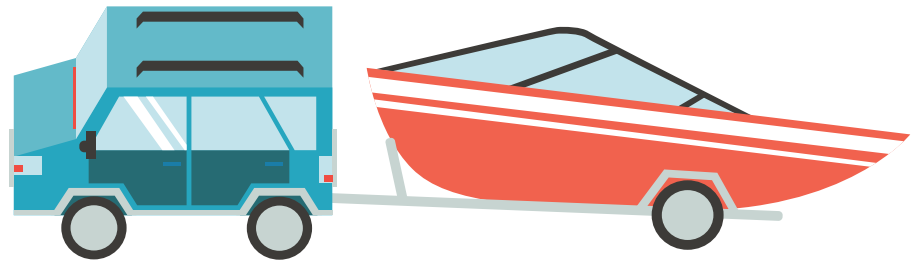
## PROTECT YOUR CARAVAN



- 1 When parking or relocating your caravan when severe weather warnings have been issued, ensure you park with the narrow end facing the wind, park out of the way of trees that might fall and be mindful of any areas that may flood during a storm.
- 2 Apply the brake/ chock the wheels.
- 3 Take your awning down as soon as possible.
- 4 Tie down your caravan securely. If there are no anchor points, dig holes under your caravan wheel to increase wind resistance, sink posts of angle iron at the tyre corners. Caravan parks in high-wind areas usually provide ground anchor points. If there is an anchor point, you should tie down your chassis with either short lengths of strong chain and turnbuckles or sound rope of at least 9.5mm diameter. If there are no anchor points, you should use nylon rope or steel cable anchored at ground level and attached to the caravan chassis.
- 5 Tie down your roof - the most effective roof tie-down is a strong net firmly fixed at ground level and passing over the caravan for the full length of the van.
- 6 Put all your equipment inside the caravan, including your annex, bikes, chairs, household items.
- 7 In addition, if storm surge or flood warnings are issued, unplug all electrical devices and place them on a higher level rather than on the floor to prevent them from getting wet, and switch all gas supplies off.
- 8 Even if your caravan is securely tied down, you should seek other shelter when warned of approaching high winds.
- 9 When exploring the wilderness, caravanners should be prepared for bushfires and wildfires. To protect your caravan from fire, install a smoke and carbon monoxide detector in your rig for an added safety measure, keep a fire extinguisher near the door inside the caravan and make sure to open a door or window when the heater or cooker is in use to ensure the area is well ventilated.

## PROTECT YOUR BOAT

The key to protecting your boat from cyclones or any threatening severe weather is planning, preparation and timely action. Each boat owner needs a plan unique to the type of boat, the local boating environment and the severe weather conditions.



Severe weather season in Queensland is from November to April. Before the next disaster season hits develop a detailed ‘what-if’ plan of action to protect your boat.

### If your boat is on a trailer

- If time permits remove boat and trailer out of cyclone path.
- Remove the outboard, safety equipment, radios, sounders, bimini covers and any other valuable items that may be blown away or damaged.
- Remove it from the trailer, placing it on the ground facing the direction the wind will come from, and lash it with 24mm rope or chains to ground anchors or the most secure object available. Place the boat away from trees or objects that may fall on them. Half fill the boat with water, except for stern drive or inboard motored boats.
- If you are unable to remove the boat from the trailer, turn the boat to face the wind, let the air partially out of the tyres and place wooden blocks between the frame member and the axle inside each wheel. Lash it with 24mm rope or chains to ground anchors or the most secure object available. Place the boat away from trees or objects that may fall on them. Filling a boat on a trailer with water may break your trailer springs and axle wedges should be forced into the springs to distribute the additional weight on the axle.
- Ensure the boat is located away from trees or loose objects.

### If your boat is in the water

- Contact your local Coastguard, Volunteer Marine Rescue Unit, Marine Watch or Harbour Master to find out where the designated safe anchorages are and any cyclone plans that may be in place.
- Know your marina’s extreme weather contingency plan – particularly if they require you to remove your vessel.
- Ensure that your boat can reach the safe anchorage remembering that tides may be higher than normal – make a trial run at the beginning of the cyclone season.
- If you are out on your boat during severe weather, personal safety is the number one priority. At the first sign of bad or severe weather while you are on the water, make sure everyone on board is wearing a personal flotation device or life jacket.
- If you cannot get back to your normal mooring or boat ramp, look for shelter in rivers or creeks with a mangrove fringe to act as a buffer zone from the wind.

Remember that heavy rain will increase the flow of ebb tides in any creeks or rivers.

### If your boat is moored

- Double all ties.
- Make ties high on pilings to allow for rising waters.
- Cover all tie lines at contact points with rubber or other materials to prevent chafing.
- Install fenders to protect the boat from rubbing against the dock or mooring.
- Be sure batteries are sufficient to run bilge pumps throughout the storm.
- Put duct tape on windows and hatches.
- Insert plugs in engine ports.
- Strip bimini tops, sails or any other object that could blow away.
- Disconnect shore power.
- Close fuel valves and cockpit seacocks.

### Plan ahead before you go out on the water

- Always check marine weather forecasts before you go boating. Keep checking them while you are on the water.
- Forecast telephone numbers:
  - All of Queensland – **1300 360 426**
  - Marine warnings – **1300 360 427**
  - South East Queensland – **1300 360 428**.
- Marine forecasts are accurate when predicting major weather events, such as cyclones, but are sometimes less accurate when predicting local severe weather, such as strong winds in storms. Be prepared for sudden unexpected weather changes.

### Make sure you’re covered

For most boat owners, marine insurance is a necessity but not all boat insurance policies are created equal, so it pays to compare. Ensure your policy covers damage caused **to your boat** and **damage caused by your boat** during a storm, flood or fire.